



What's happening at the border: CRMS Biofouling

Katie Lubarsky

Adviser, Treatments and Inanimate Pathways

Ministry for Primary Industries

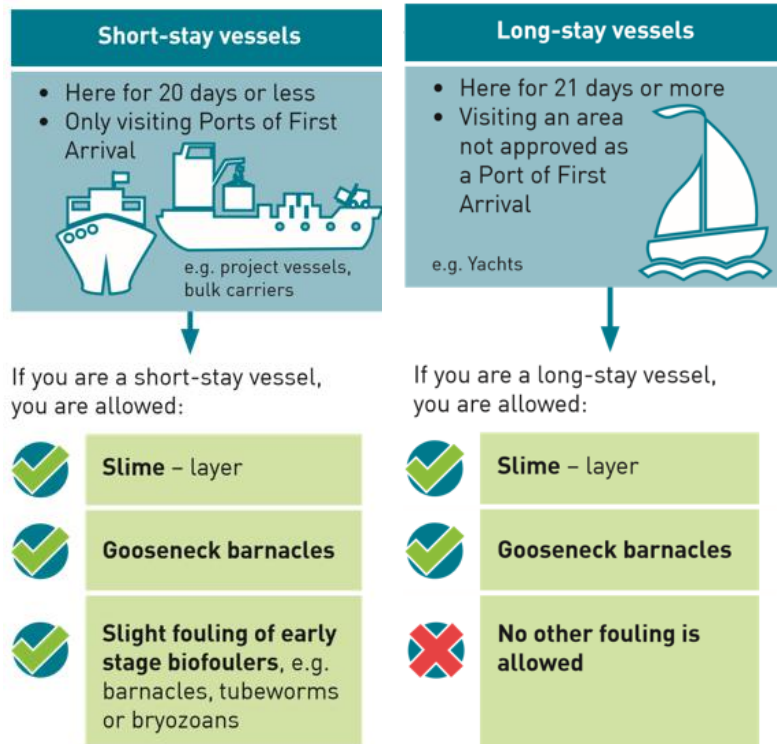


The Craft Risk Management Standard for Biofouling (CRMS)

Intent:

To reduce risk of biofouling by requiring operators to take preventative measures to manage biofouling before arriving into NZ.

Came into force on **15 May 2018**.

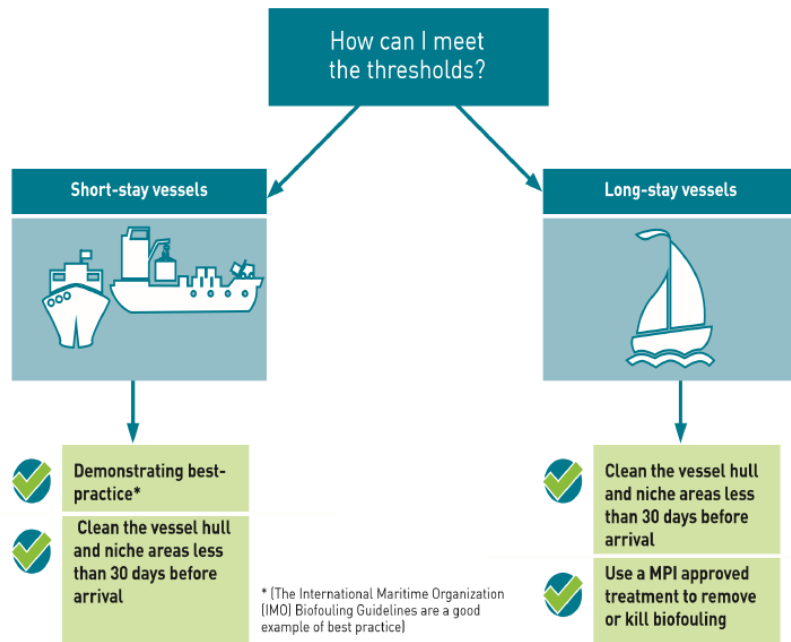


How to comply

Vessels must carry **documentation** showing that:

- a) The vessel has been continually maintained following best practices, **or**
- b) The vessel has been cleaned <30 days prior to arrival, **or**
- c) The vessel is booked to be hauled out within 24 hours of arrival at an MPI-approved facility

Outcome needs to be a “**clean hull**”.



Craft Risk Management Plans

- Vessels that cannot meet the requirements by undertaking the measurements in the CRMS can apply for a **Craft Risk Management Plan (CRMP)**.
 - Outlines alternate management actions that meet the same risk management outcome as the standard
 - Approved by MPI
 - Cruise vessels, military vessels, domestic fishing fleet, oil rigs, etc.



Risk Profiling and Verification

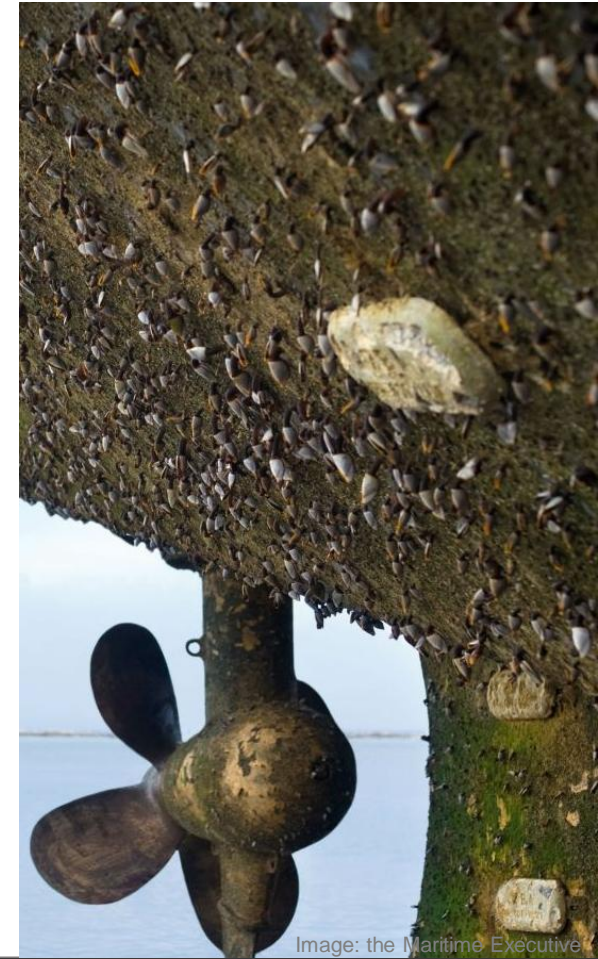
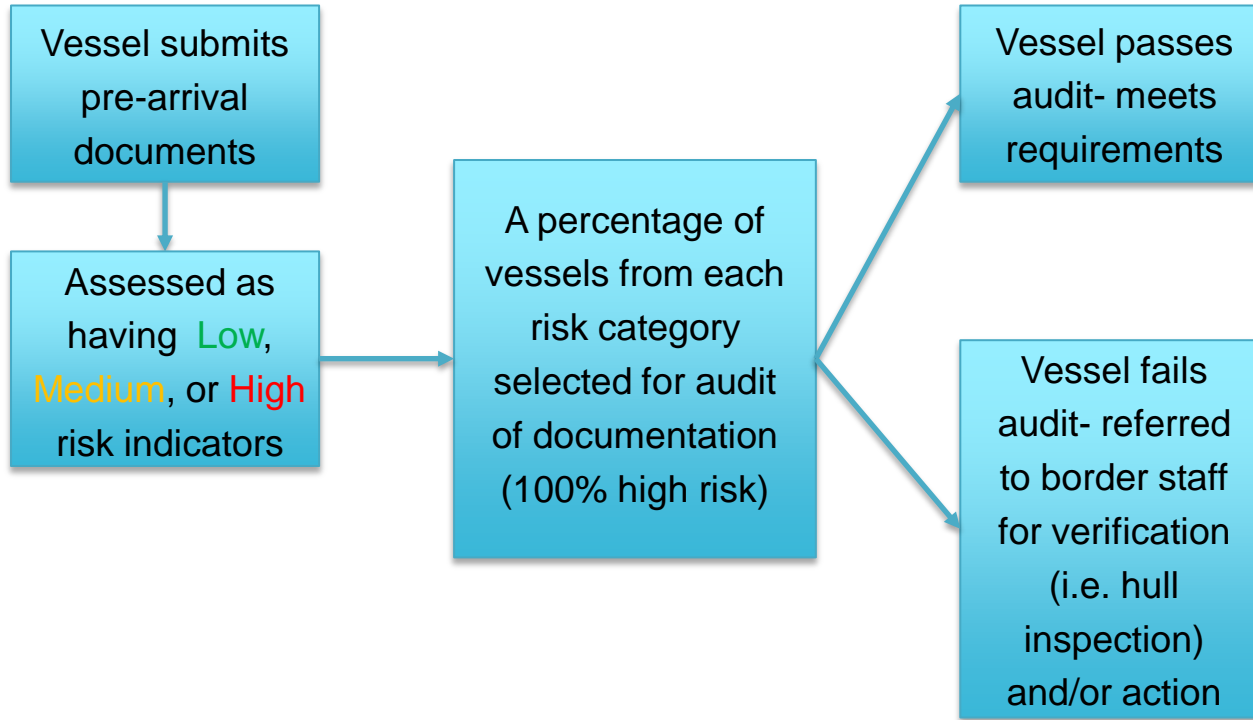


Image: the Maritime Executive

Non-compliant vessel: Action

Vessel is referred to border staff for action

Action taken based on level of fouling (biosecurity risk):

- Hull inspection
- Issuing educational material
- Itinerary restriction
- Direction to leave NZT

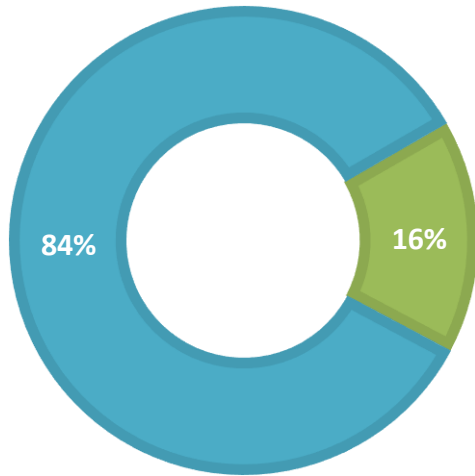
VADE Model

Voluntary **A**ssisted **D**irected **E**nforced



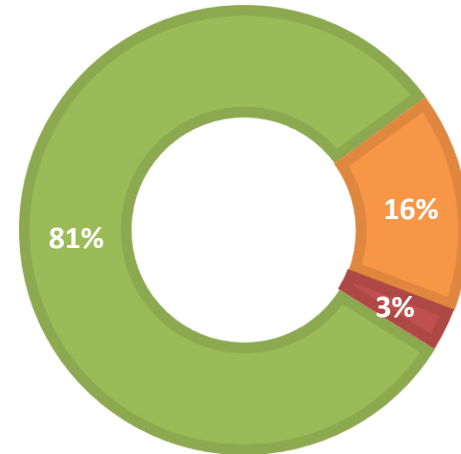
1 Year Summary- Total Vessel Arrivals

■ Audited ■ Not Audited



2555 Total Arrivals*

■ Low Risk ■ Medium Risk ■ High Risk

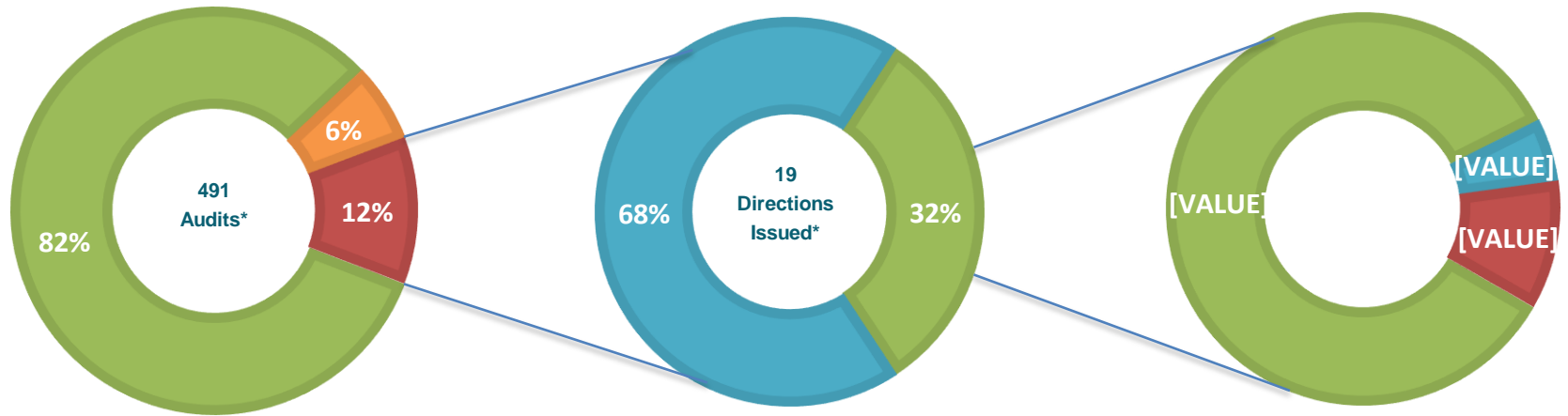


* Excludes recreational vessels

1 Year Summary- Vessel Audits

■ Passed ■ Issued Education ■ Failed

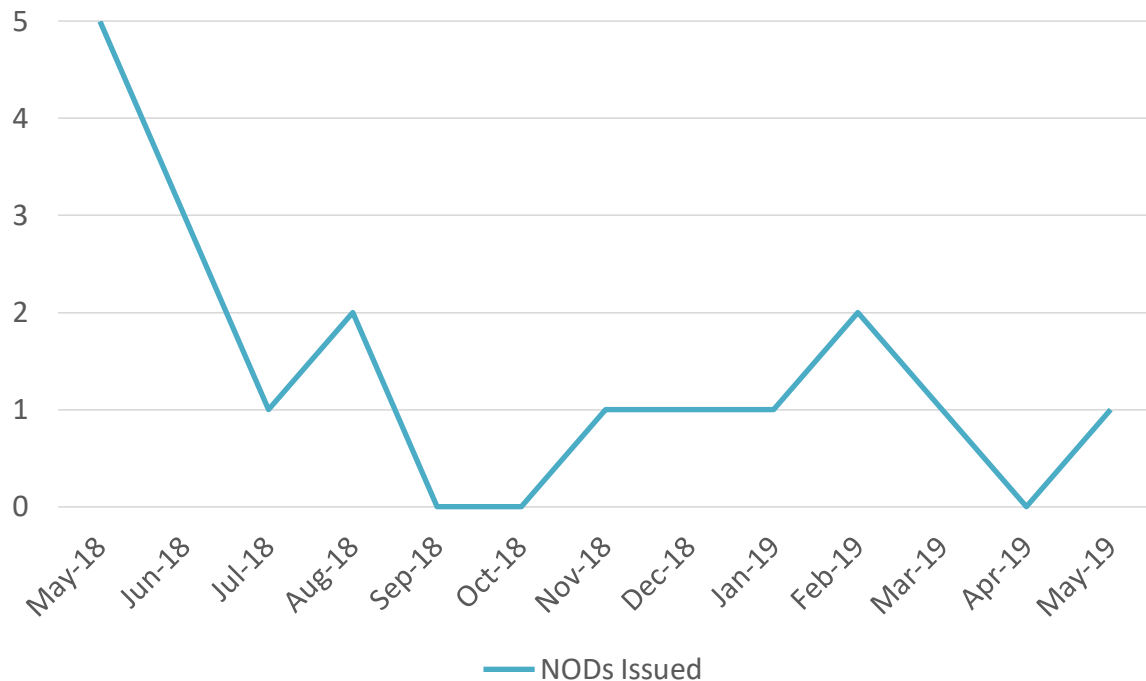
■ Issued Direction ■ No Direction



■ Itinerary Restriction ■ Dry Dock ■ Obtain Evidence

* Excludes recreational vessels

1 Year Summary- Action Taken



* Excludes recreational vessels



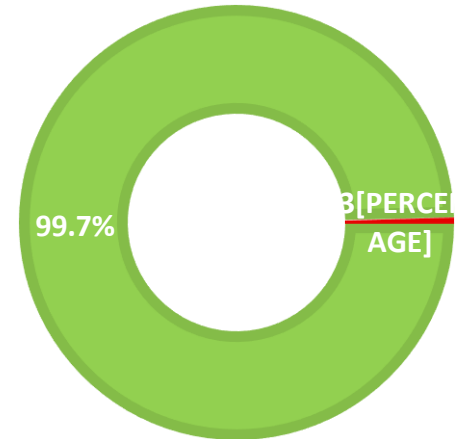
Image: Safety 4 Sea

Recreational Vessels

Data from 15 May 2018- 24 February 2019

- 546 yacht arrivals
 - 2 yachts found non-compliant with CRMS Biofouling
- During summer yacht season, 75% of yachts arriving in Opuia were verified using pole camera

■ Compliant ■ Non-compliant



Ministry for Primary Industries
Manatū Ahu Matua

