

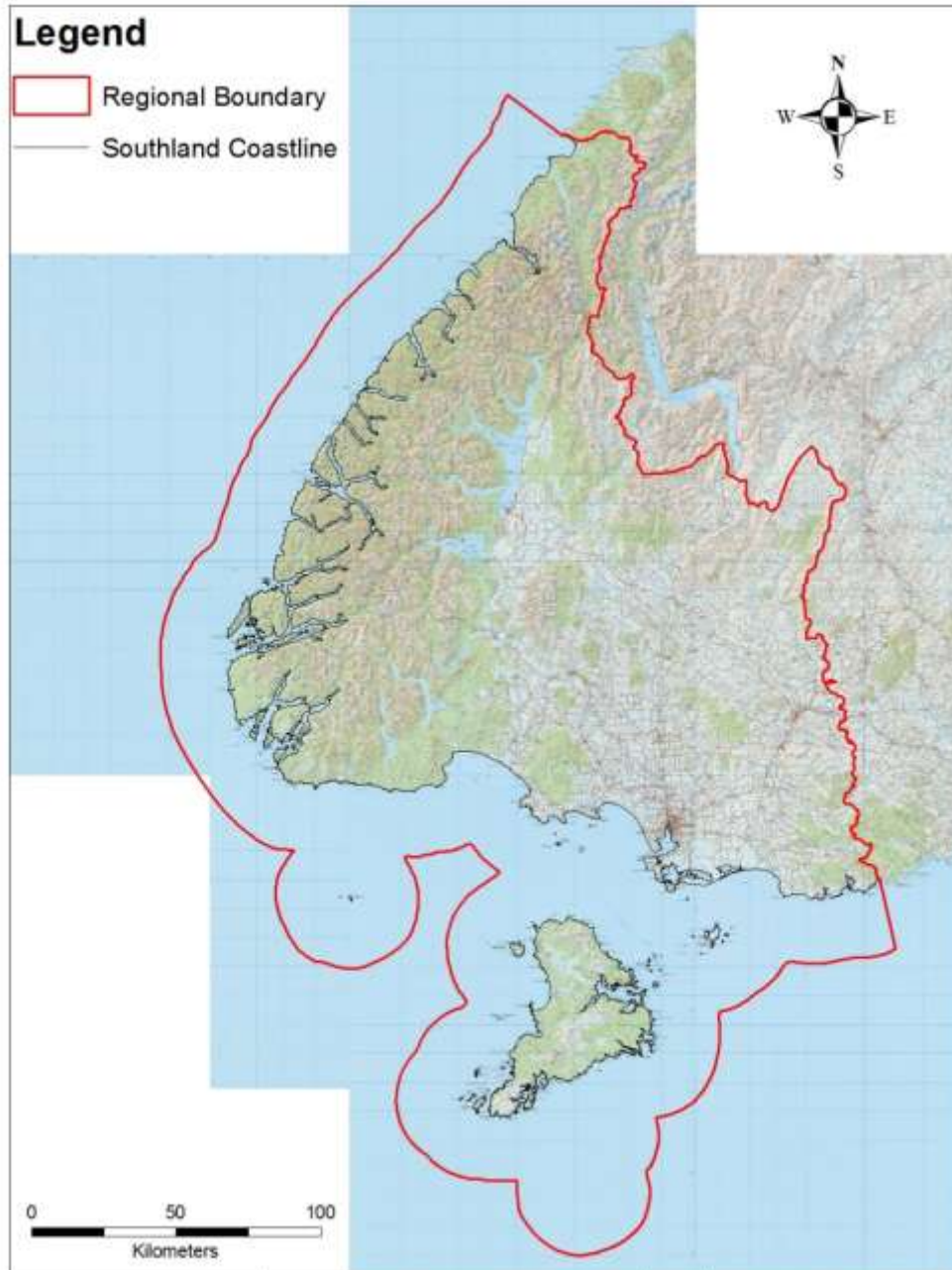


Legend

-  Regional Boundary
-  Southland Coastline



0 50 100
Kilometers



Southland's CMA



Cartographic information derived from Land Information New Zealand's CROWN COPYRIGHT RESERVED. Aerial Photography taken 10/10/07 to 14/03/2008. Copyright Terralink International, Inc.

DISCLAIMER: Environment Southland cannot guarantee that the information shown is 100% accurate and should not be relied on, or otherwise used without proper consultation.









Fiordland Marine Guardians

Fiordland (Te Moana o Atawhenua) Marine
Management Act 2005

Fiordland Marine Area

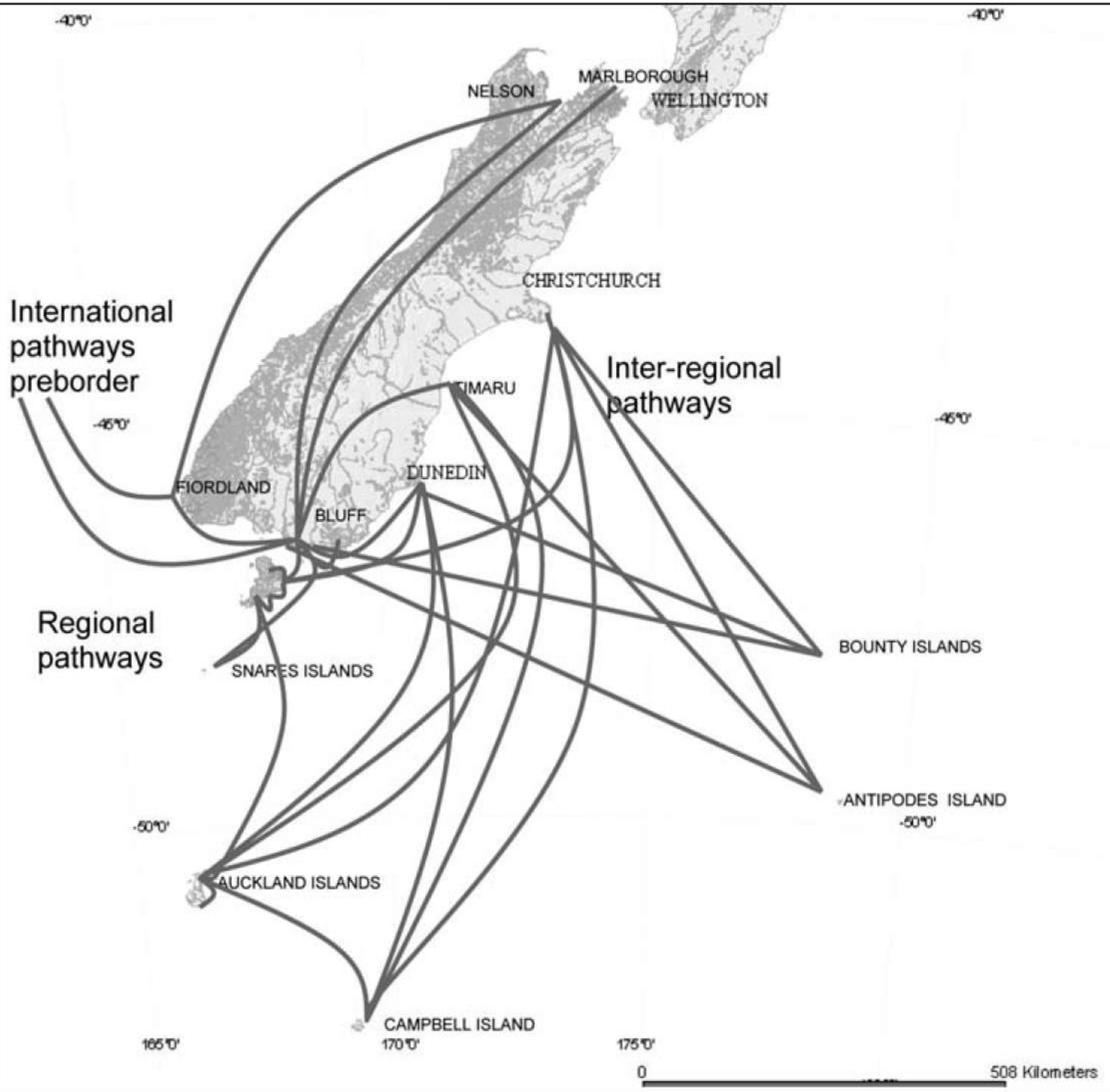
FMG formally recognised and appointed by the
Minister for the Environment



**Fiordland
Marine Guardians**
Beneath the Reflections

“That the quality of Fiordland’s marine environment and fisheries, including the wider fishery experience, be maintained or improved for future generations to use and enjoy”





Fiordland Marine Pathways Plan

2012 Amendment to the Biosecurity Act 1993

Focus on the vectors

ES, the Fiordland Marine Guardians, MPI &
DOC

“to ensure all vessels and gear entering or residing in Fiordland waters are clean and do not carry pests”





Clean vessel pass

Declare that they understand the standards

That their vessel meets the standards

Stays on vessel and is applied for annually





No more than a slime layer
and goose barnacles

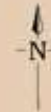
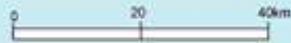


Visibly clean, free of fouling
and sediment, and dry*



Residual seawater is treated
and/or visibly clean and free
of sediment

Fiordland (Te Moana o Atawhenua) Marine Reserves



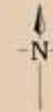
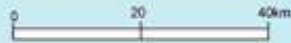
Implementation

- Continued coordination
- Clean Vessel Pass system
- Communications
- Compliance
- Surveillance and monitoring

How can we make this work?

- National issue
- Make vessel owners aware of Fiordland Plan
- Let us know who we should talk to
- Share contacts
- Continue to push marine biosecurity message

Fiordland (Te Moana o Atawhenua) Marine Reserves



12 NM

Milford Sound/Piopiotahi

Piopiotahi (Milford Sd)

Sutherland Sound
Bligh Sound

Te Hapua (Sutherland Sd)

George Sound

Hawea (Clio Rocks)

Caswell Sound
Charles Sound

Nancy Sound

Thompson Sound

Kahukura (Gold Arm)

Doubtful Sound/Patea

Te Awaatu Channel (The Gut)

Kutu Parera (Gaer Arm)

Dagg Sound

Taipari Roa (Elizabeth Is)

Breaksea Sound



Moana Uta (Wet Jacket Arm)

Taumoana (Five Fingers Peninsula)

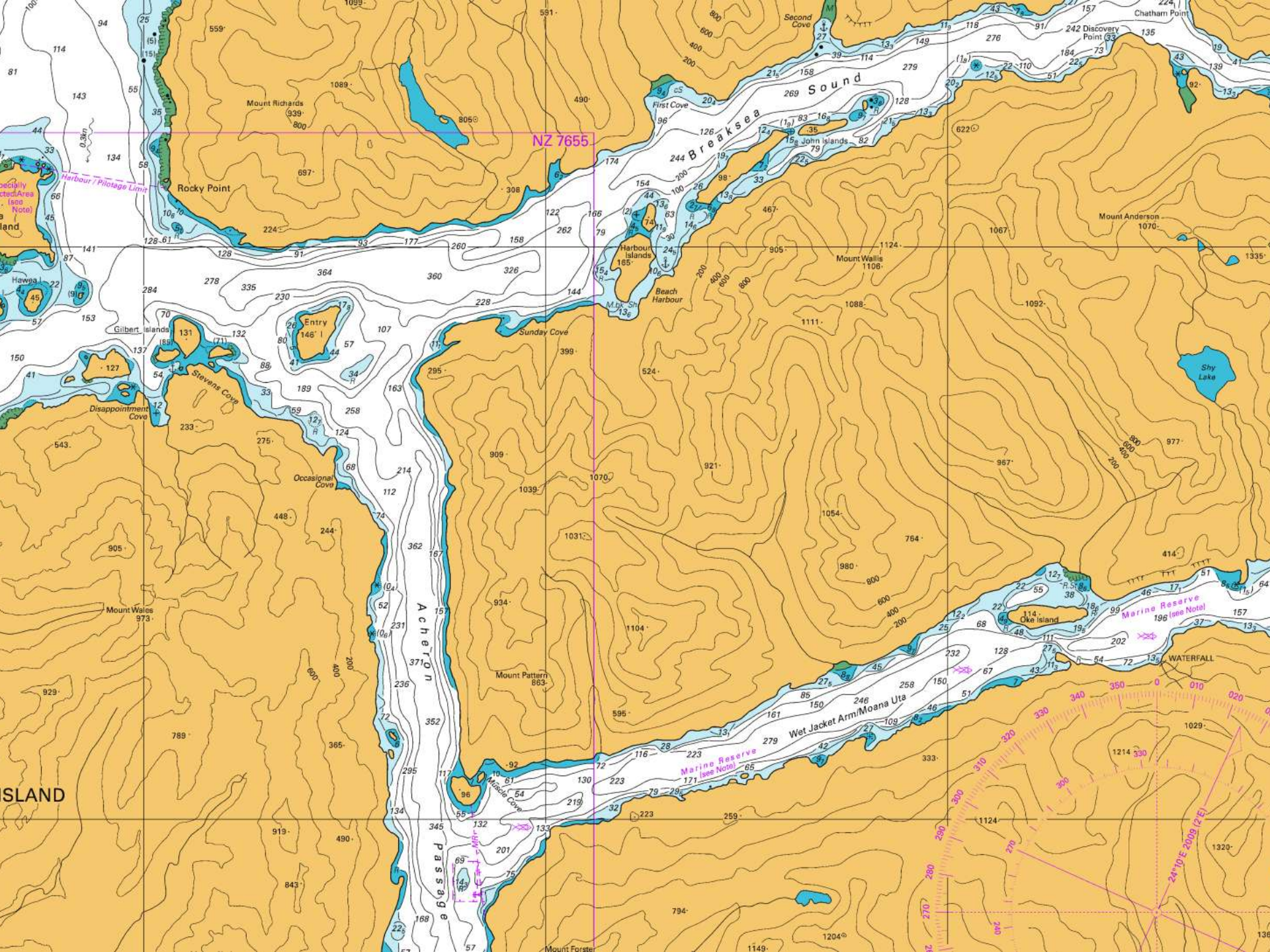
Dusky Sound

Chalky Inlet

Preservation Inlet

Te Tapuwae o Hua (Long Sound)

12 NM



0 0.75 1.5 3 Kilometers





Video