

# Annual Report 2013/2014



Peter Lawless  
Coordinator

# Marine Biosecurity

Exclusion, eradication or effective management of risks posed by pests and diseases to the economy, the environment and human health

**Unlike “traditional” pollutants, marine pests and diseases can have irreversible national scale impacts**



Asian kelp affects natural habitats

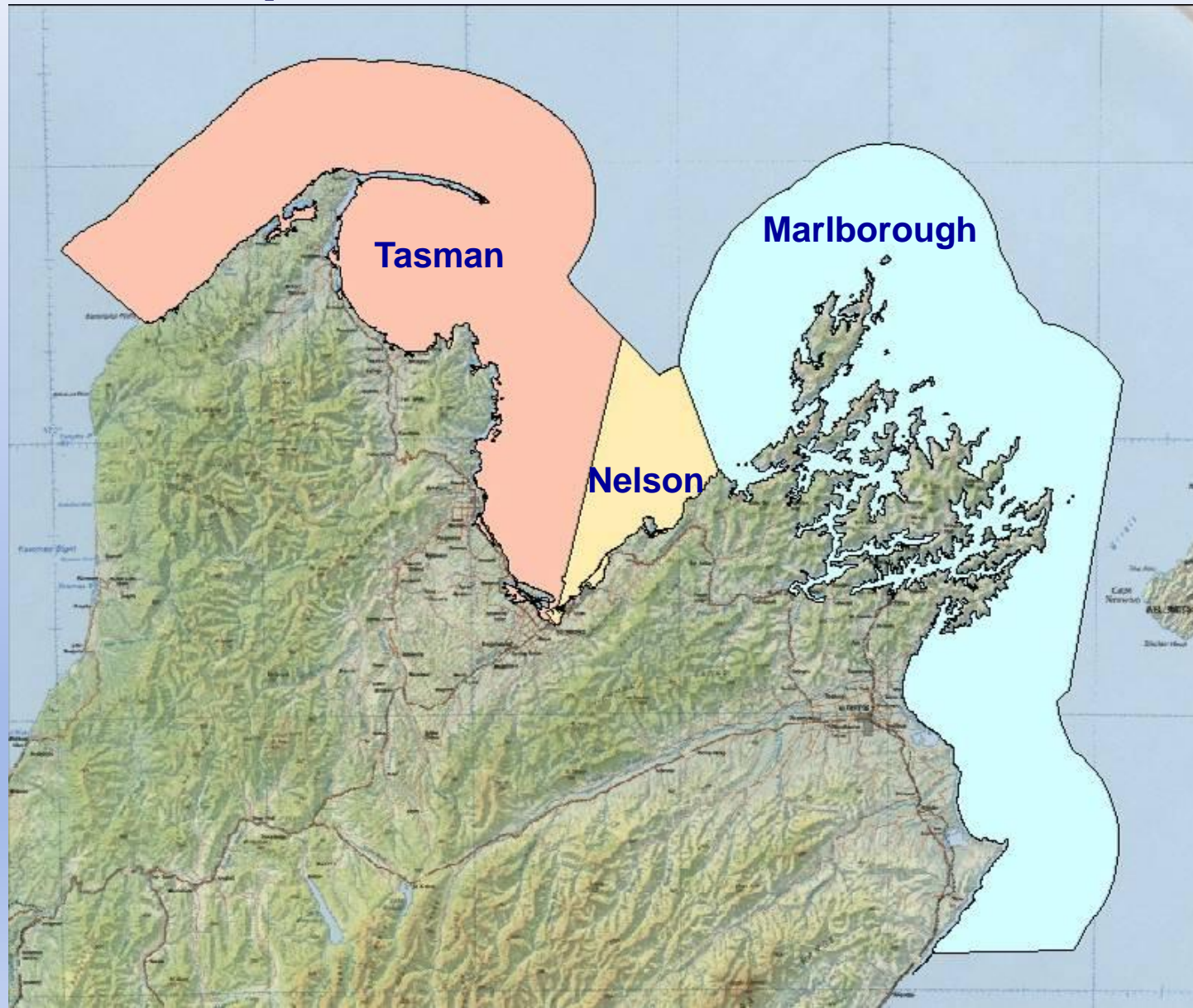


Sea squirt affects mussel culture

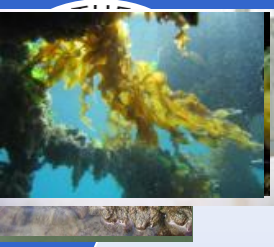


Sea squirt clogs salmon farm nets

# Top of the South Area







# What we are grappling with now

- *Styela* – removal in Picton and some of Nelson
- *Sabella* – removal in Nelson searching Waikawa
- *Undaria* – slowly spreading



# Others on their way

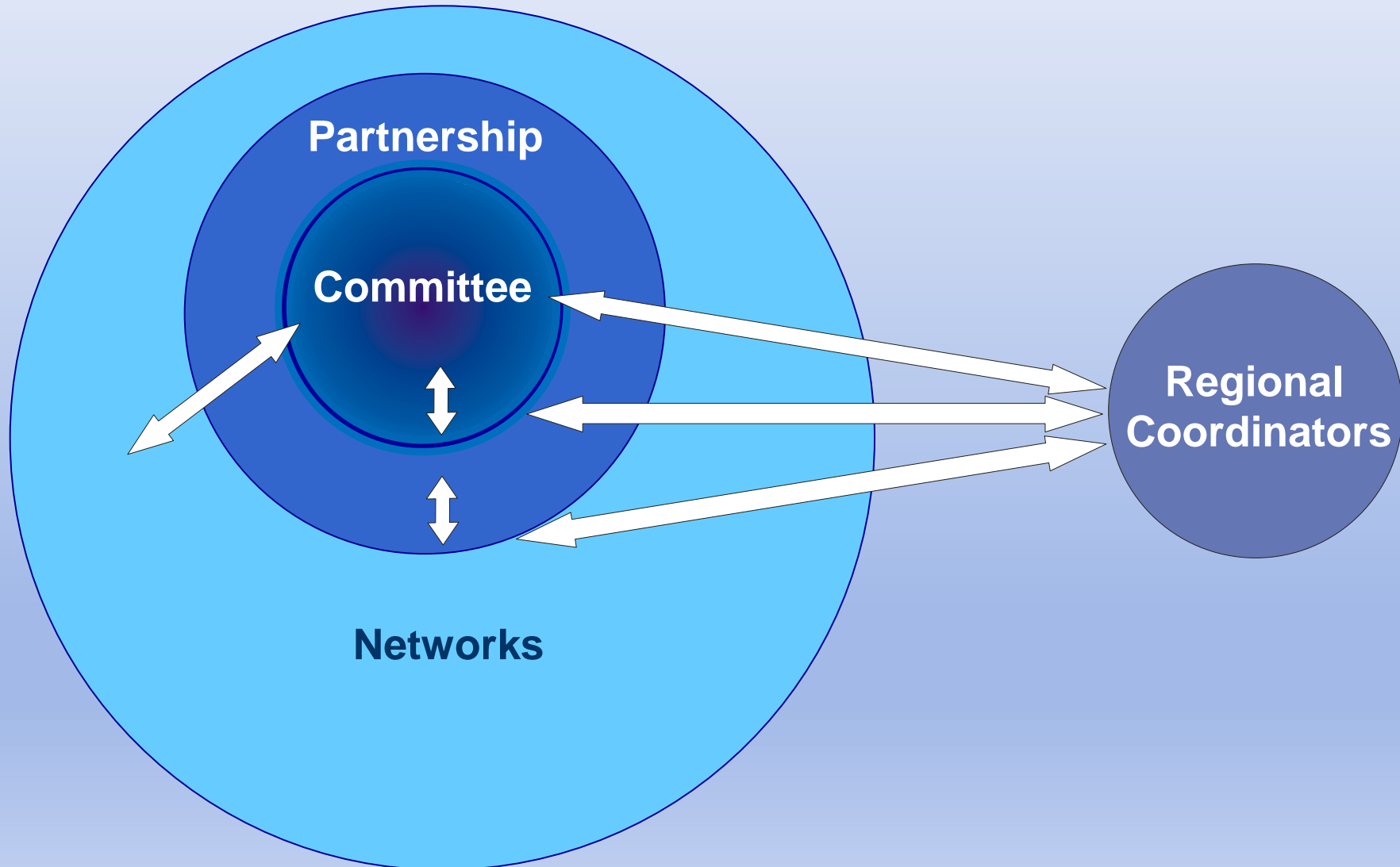
- *Pyura*



- *Eudistoma*



# Marine Biosecurity Partnership



# Partnership support

- X1 Partnership Forum
- X4 Management Committee meetings
- X2 Iwi 8 meetings
- Monthly project management and reporting

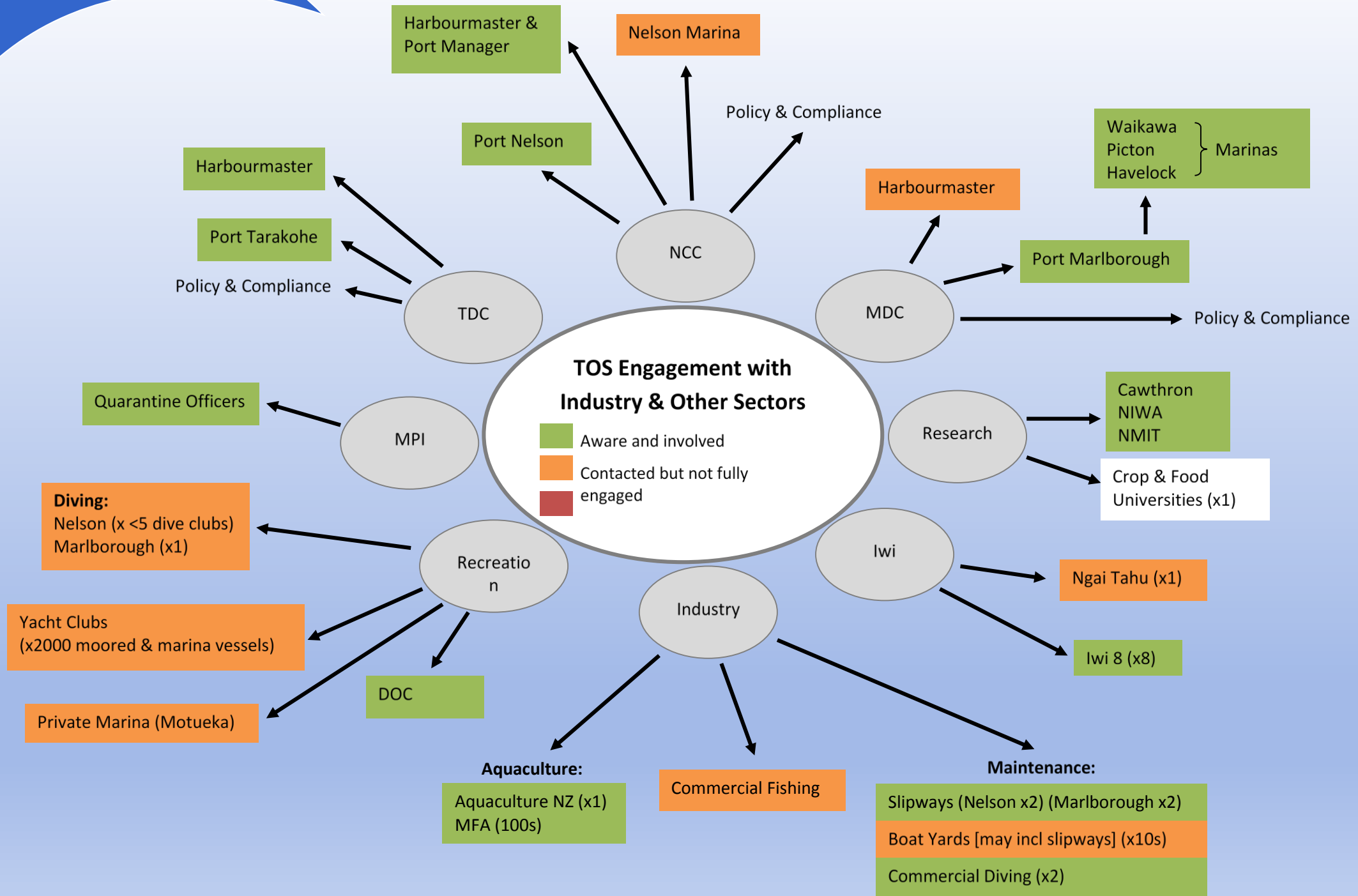
# Public awareness and networking



Website  
Newsletters  
Media  
Networking



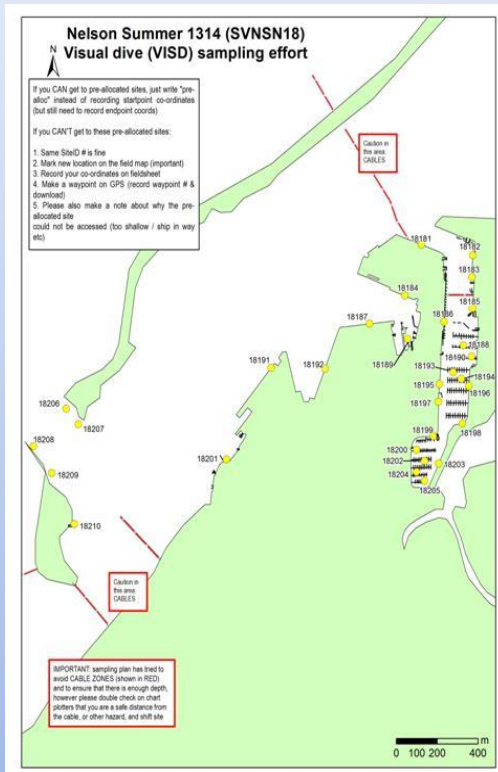




- Regulatory solutions
- Science support
- Monitoring
- Incidents
- National links

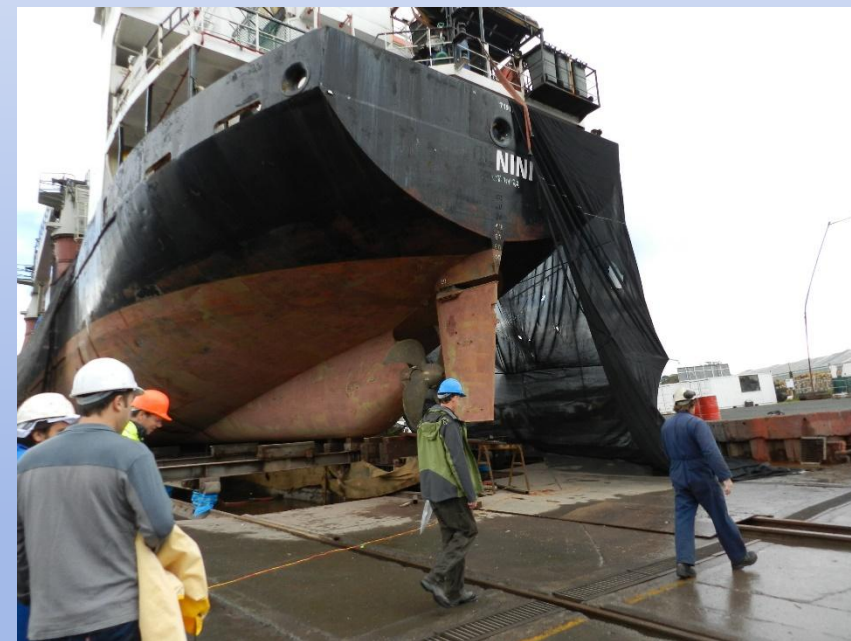


# Projects





# Raroa, Manini, Prince of Tides – good news stories



# Ongoing risks



© Biggles Maindonald  
MarineTraffic.com



# Incursion responses

Manini

Raroa

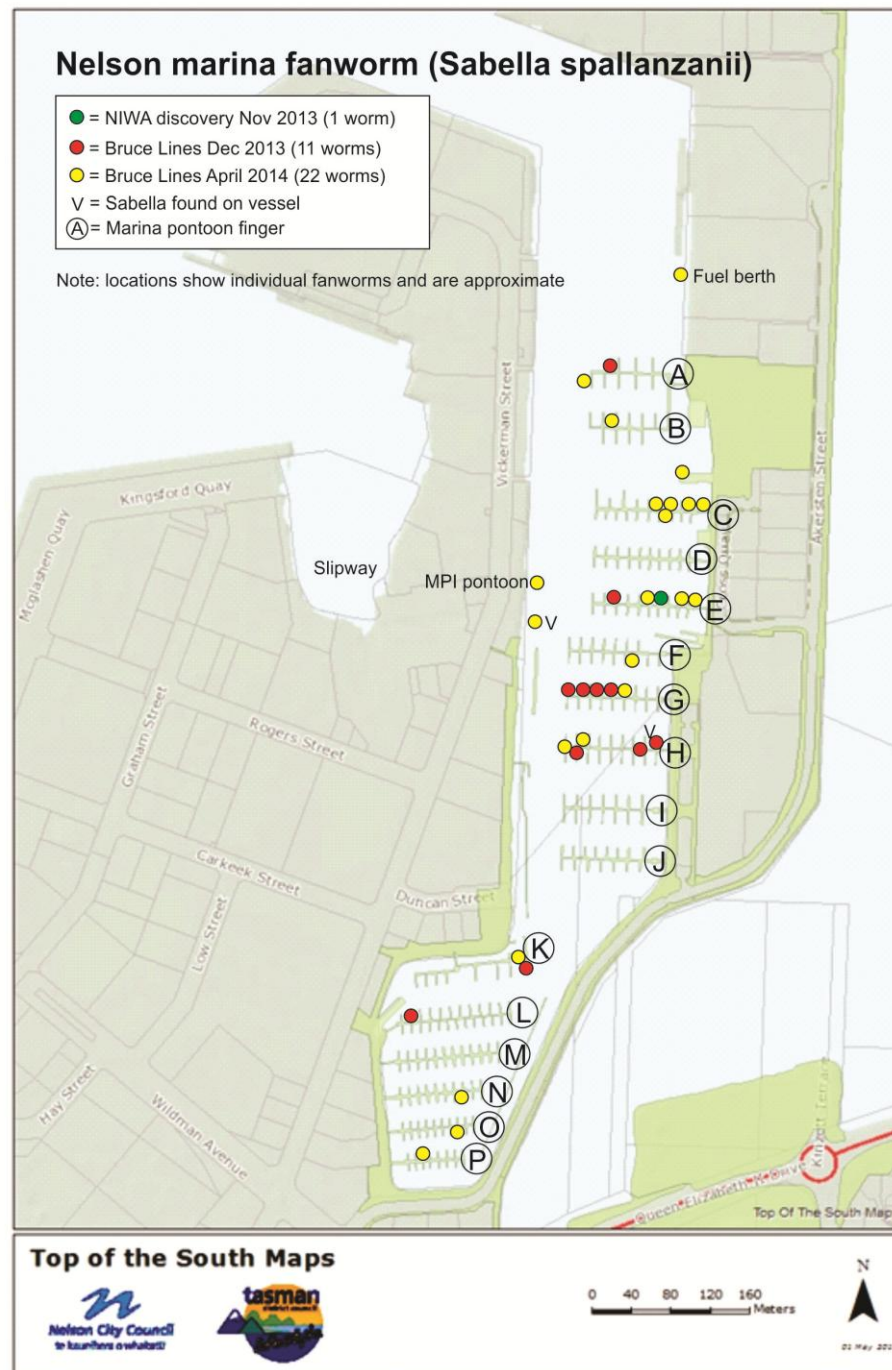
Prince of Tides

Spirit of Independence

Nelson *Sabella* finds

Picton *Styela*

Waikawa *Sabella* and *Styela*



# Publications

- Vessel Hull Fouling as a Marine Biosecurity Indicator In the Top of the South 2013 Survey
- Management of the Clubbed Tunicate, *Styela clava*, in Picton October 2013
- Incursion Response Manual Version 2.6 January 2014
- Operations Manual 2.6 January 2014
- Newsletters x4

# Reports

Policy package

Intertidal cleaning

Regional pathways plan

Berth agreements

Incursion and near miss register

*Sabella* reponse options

# Business Plan 2014/2015

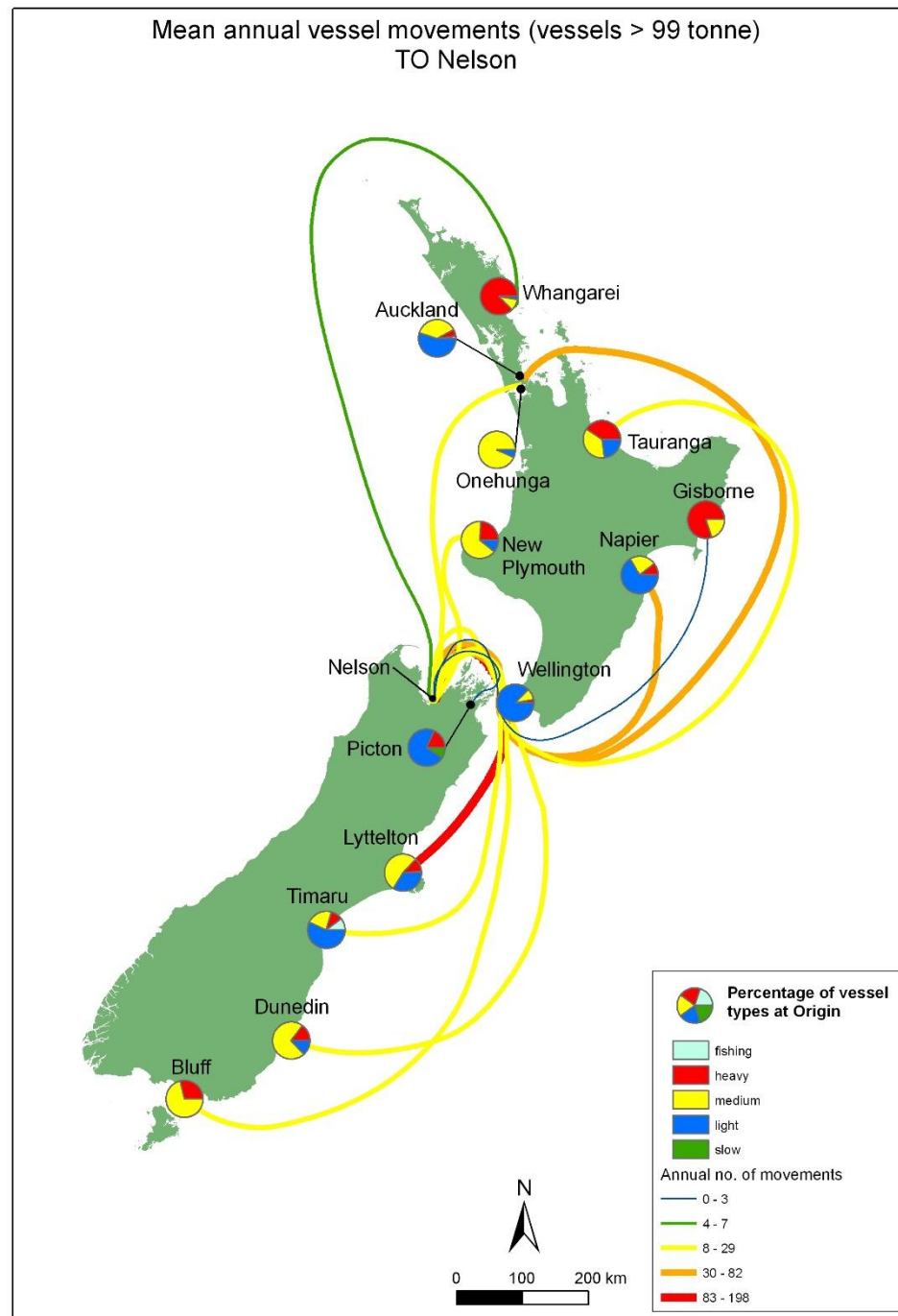




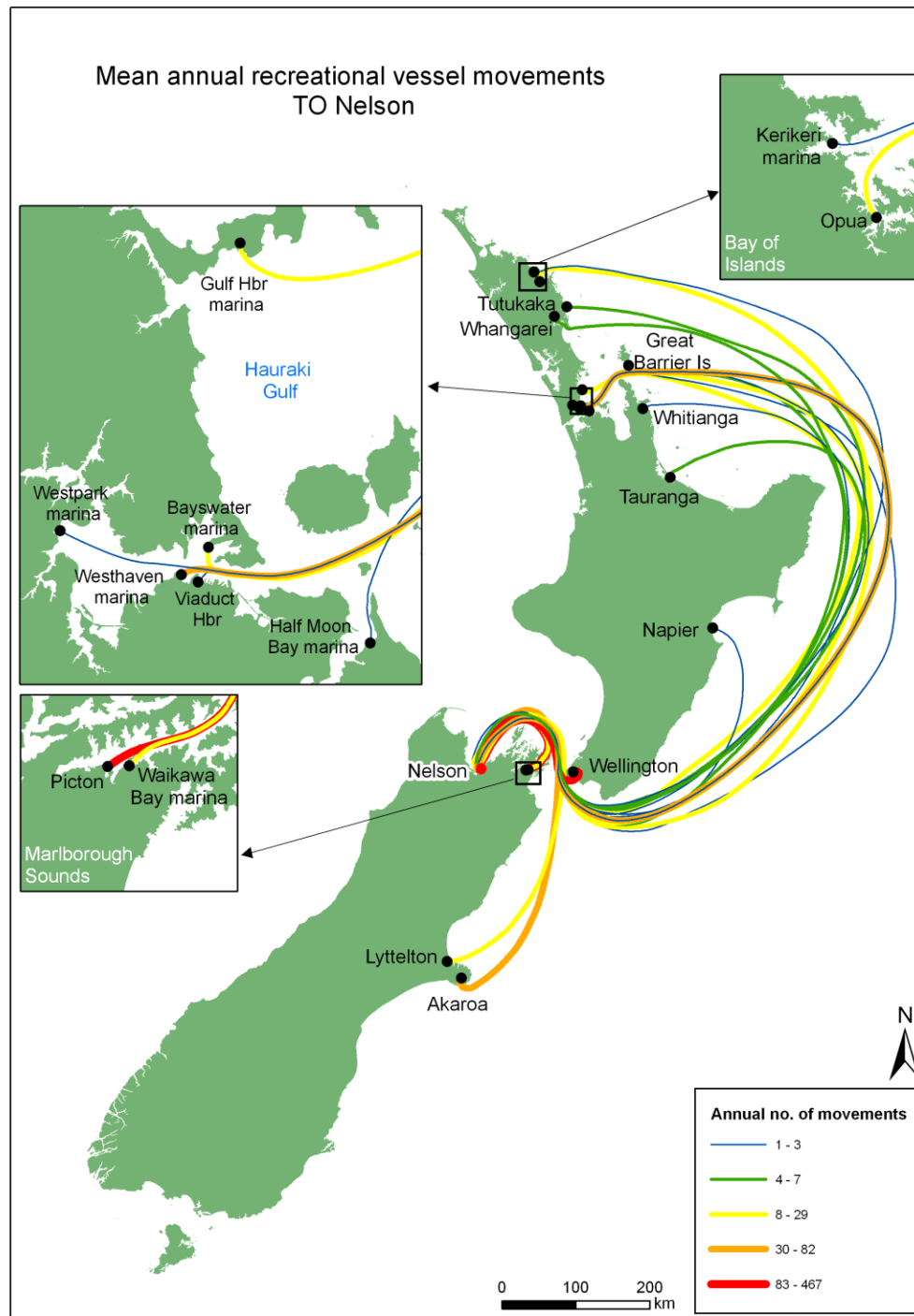
# Focus on regional pathways



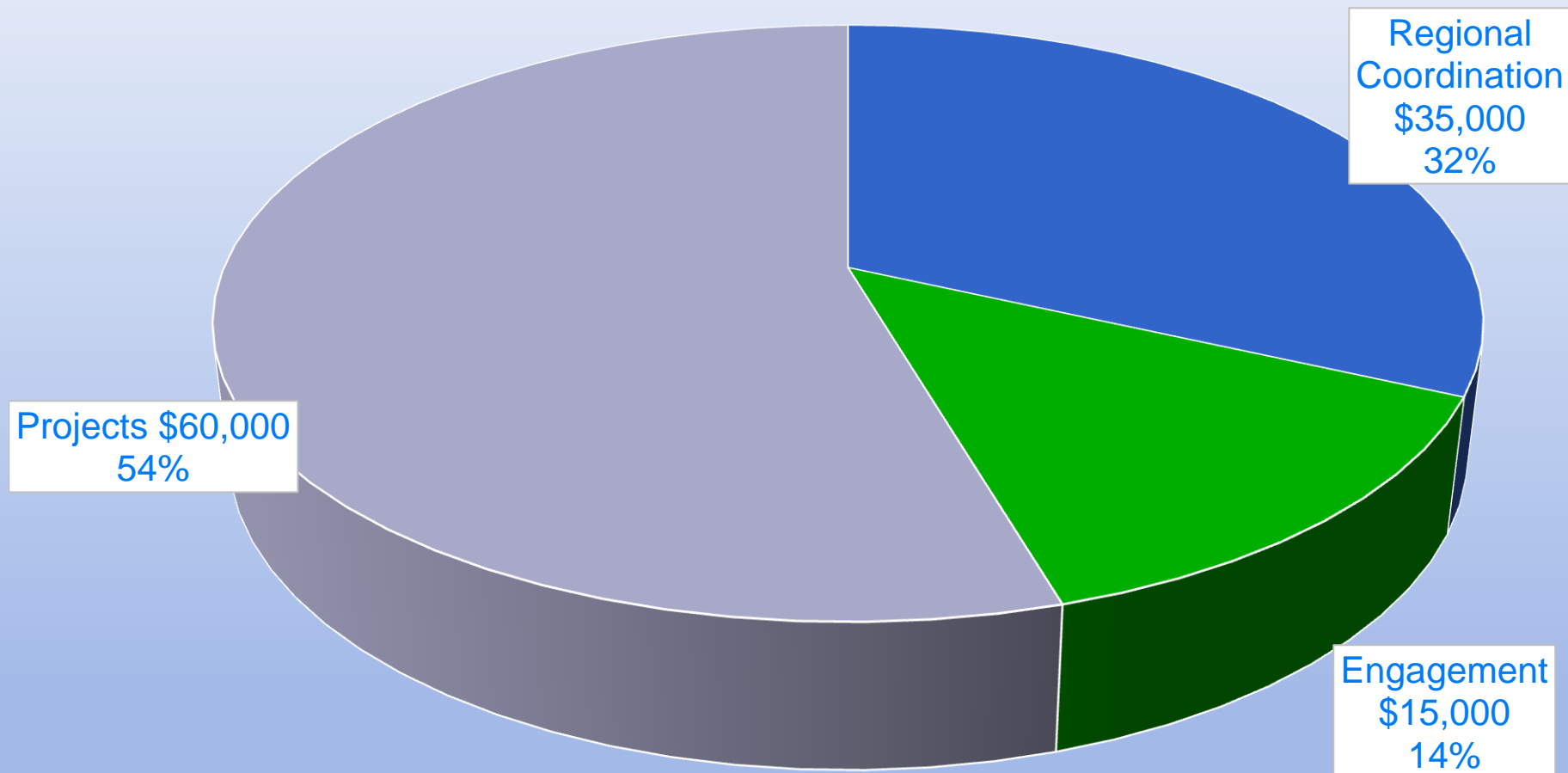
# Commercial vessels



# Recreational vessels

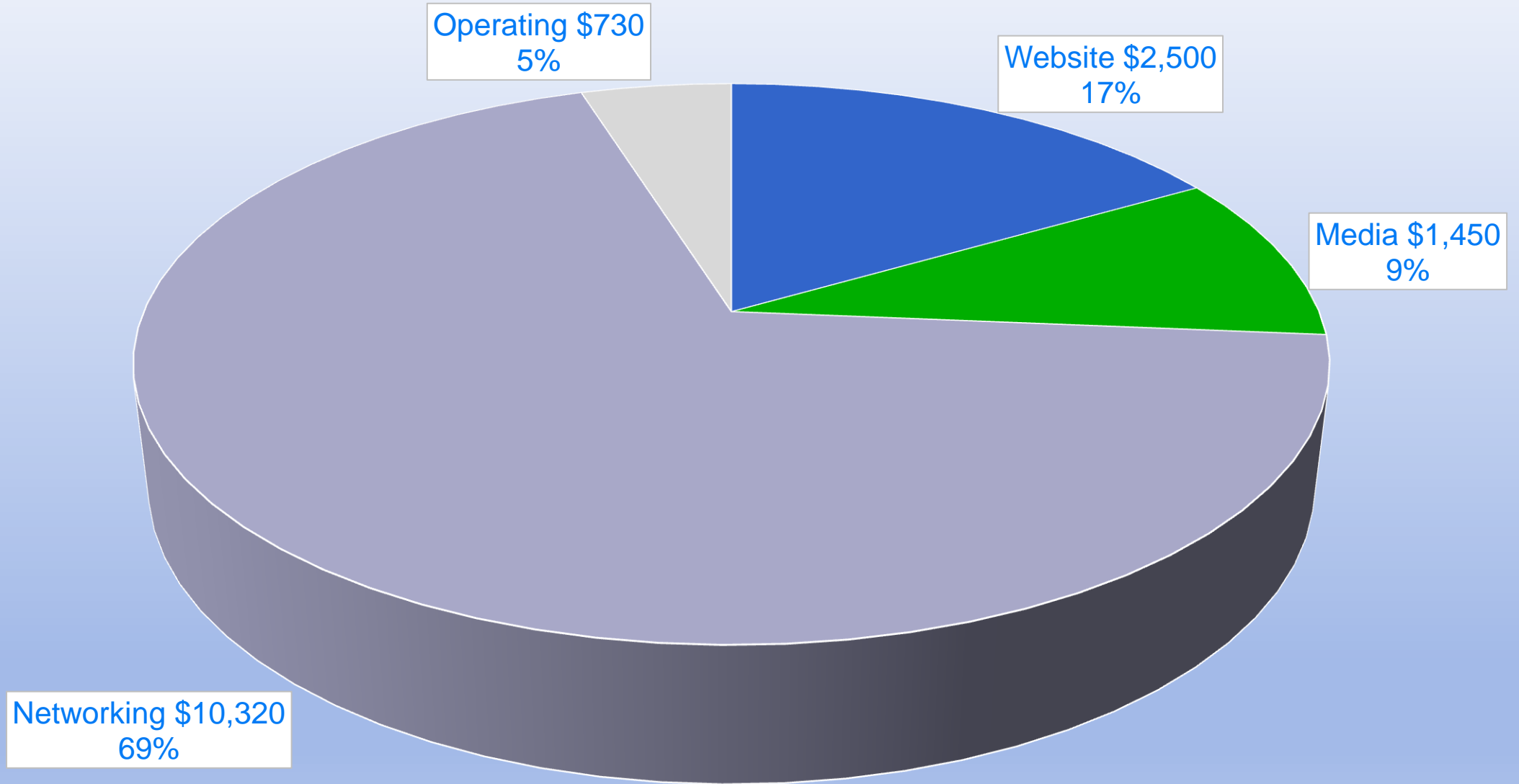


# 2014/2015

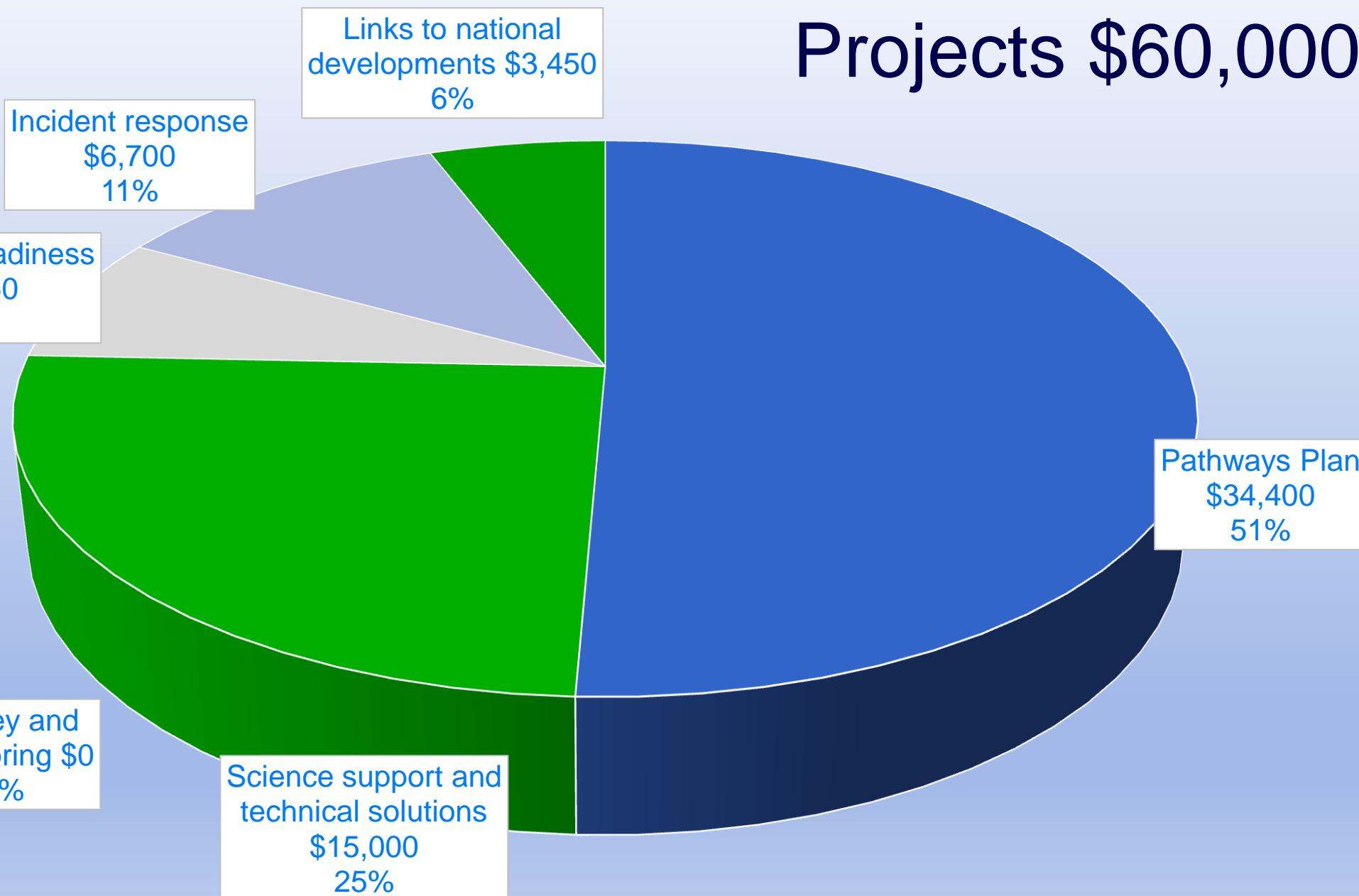




# Engagement \$15,000



# Projects \$60,000



What are the operational requirements?

Systems and processes

Intelligence

Surveillance

Operational response

Enforcement

Infrastructure

Awareness and socialisation

What does the law allow?

Regional pest management plans x2

Regional pathway plan x1

Regional coastal plans x3

# Effective vector management

- Engages the full range of stakeholders in reducing biosecurity risks
- Identifies high risk vessels
- Inspects high risk vessels and other vectors
- Removes the risk or excludes the high risk vector from the region
- Allows low risk vessels to move freely with a minimum of compliance requirements